

Linear Tear Zipper / Stepped Tear Zipper

PLALOC™
Press-To-Close Zipper

Features

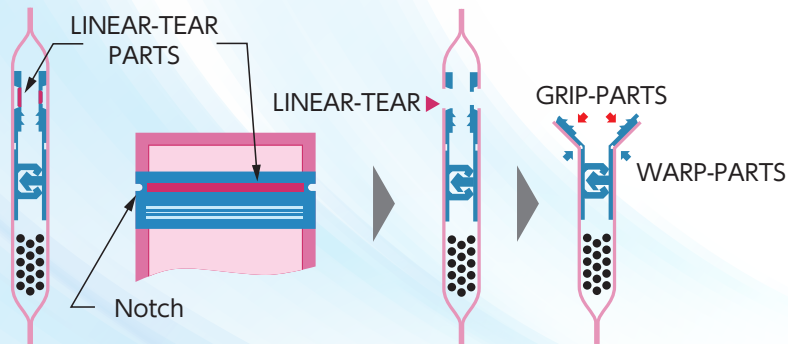
- Linear tear due to design of zipper
- Easy to tear without scissors



Linear tear zipper

Zipper style#: MFB-923, MFB-993Z1 and MFB-994

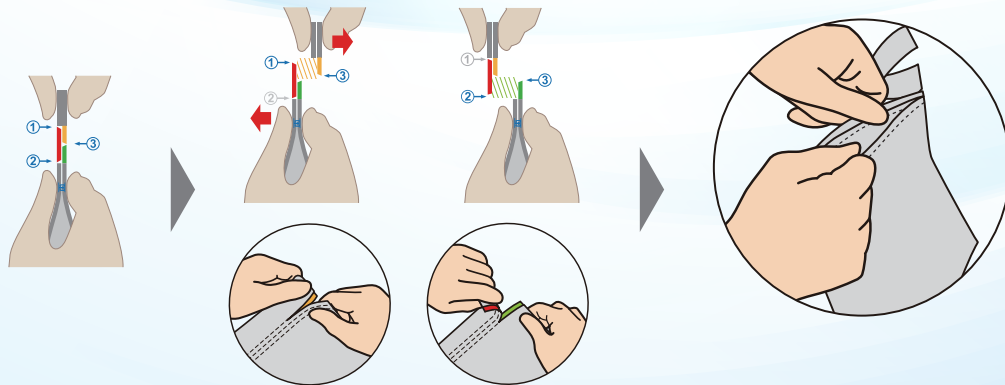
- Easy to tear off in a straight line, no need to use scissors
- Easy grip after tearing the notch
- Warp parts make the mouth open wider



Stepped Tear Zipper (under development)

Zipper style#: MFB-924Z2 (under development)

- The opening flanges are designed to be uneven after tearing, offering an easy grip on the flanges when opening a pouch



※Data in this catalogue shows sample figures measured under certain specific conditions.
※Usage of products in this catalogue does not warrant the successful results of applications of the product for specific usage.
※In case of product being used for purpose and usage introduced in this catalogue,
please pay attention to industrial property rights of a third party which may relate to such use.
※Please note that the content of this catalogue may be altered from time to time according to improvement of products without prior notice.

